

1179285

MODERN THREE BEDROOM VILLA IN THE HEART OF PAREKKLISIA

 Pareklisia, Limassol

€410,000 +VAT





Overview

Specifications

Bedrooms

 3

Bathrooms

 2

Covered

 150 m²

Type

Detached Villa

Plot

250 m²

Status

Under construction

Year of construction

2023

Furnished

Unfurnished

Description

This brand new modern designed house is ideally situated in the heart of Parekklesia Village. 5 Minutes away from Highway & Saint Raphael beach, very near to supermarket, restaurants, public schools - just 1 min walking distance, pharmacy, shops.

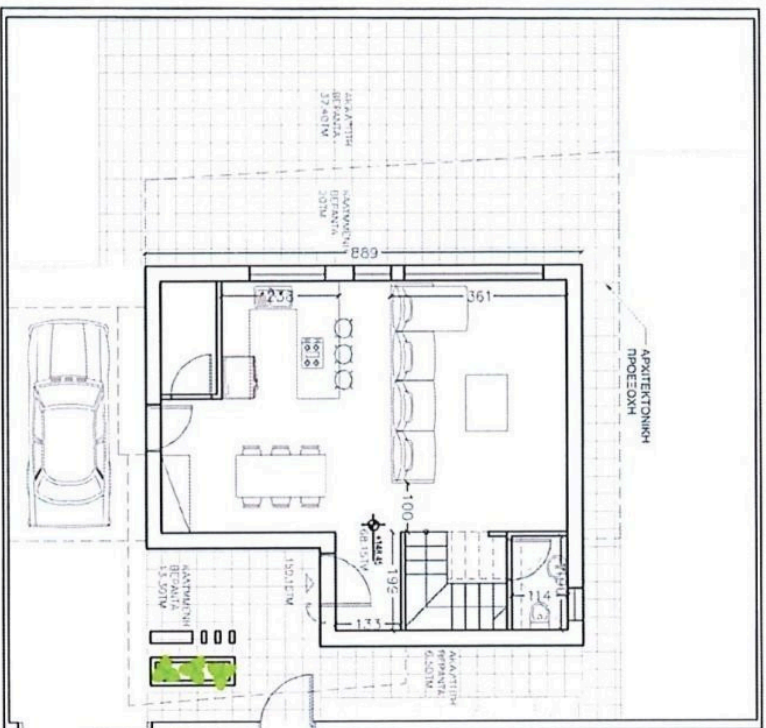
Property Features:

- . Close proximity to highway
- . Storage room
- . Guest toilet
- . Double glazed windows
- . Solar panels
- . Granite kitchen worktops
- . Pressurized water system
- . Mountain view
- . Quiet location
- . Provision for photovoltaics
- . Covered garage
- . Provision electrical shutters only in bedrooms
- . Provision alarm system

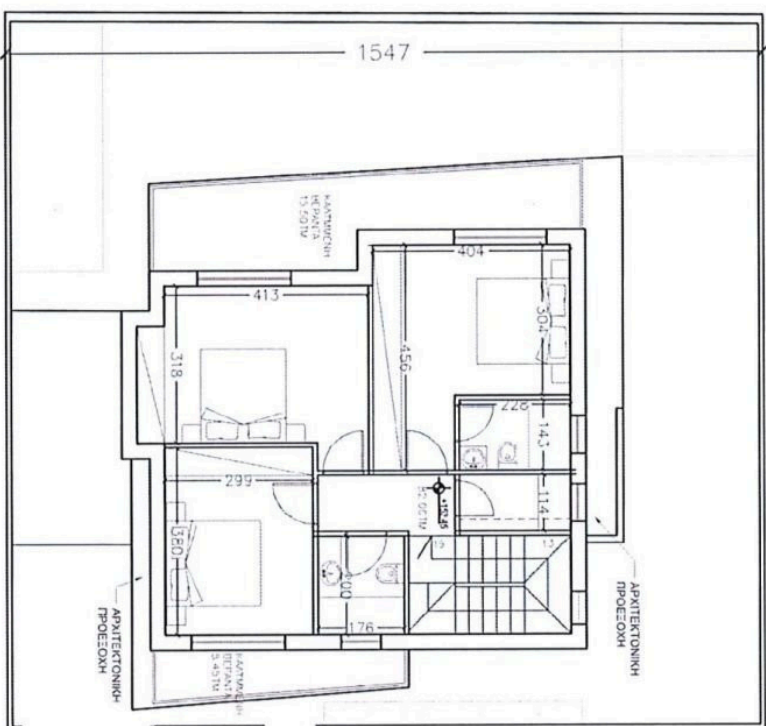
Additional Specifications:

- . En suite Bedrooms
- . Master Bathrooms
- . 3 Parking Spaces
- . 1 Air Condition Provision

ΚΑΤΟΙΚΙΑ 2



ΚΑΤΟΨΗ ΙΣΟΓΕΙΟΥ



ΚΑΤΟΨΗ ΟΡΟΦΟΥ

Additional information

Facilities

Aircondition, Provision

Pool, Optional

Heating, Provision

Solar photovoltaic panels
(provision)

Parking, Covered

Storage

Features

Alarm system (provision)

Easy access to highway

Garden

Internal stairs

Near amenities

Rental potential

Bright

Easy access to main roads

Granite countertops

Modern design

Pressurized water system

Thermal insulation

Double glazing

En suite bathroom

Guest WC

Mountain view


Quiet area

Veranda

Contact us



Office Properties

 (+357) 25871010

 info@vivorealty.com.cy