



VIVO  
REALTY



## MODERN THREE BEDROOM VILLA IN THE HEART OF PAREKKLISIA

 [Limassol, Pareklisia](#)

1179285





<b>Price</b>	€410,000 +VAT	<b>Type</b>	Detached Villa
<b>Bedrooms</b>	3	<b>Bathrooms</b>	2
<b>Covered</b>	150 m <sup>2</sup>	<b>Covered veranda</b>	53 m <sup>2</sup>
<b>Uncovered veranda</b>	47 m <sup>2</sup>	<b>Covered parking</b>	15 m <sup>2</sup>
<b>Plot</b>	250 m <sup>2</sup>	<b>Year of Construction</b>	2023
<b>Status</b>	Under construction	<b>Area</b>	Limassol, Pareklisia

## Description

This brand new modern designed house is ideally situated in the heart of Pareklisia Village. 5 Minutes away from Highway & Saint Raphael beach, very near to supermarket, restaurants, public schools - just 1 min walking distance, pharmacy, shops.

### Property Features:

- . Close proximity to highway
- . Storage room
- . Guest toilet
- . Double glazed windows
- . Solar panels
- . Granite kitchen worktops
- . Pressurized water system
- . Mountain view
- . Quiet location
- . Provision for photovoltaics
- . Covered garage
- . Provision electrical shutters only in bedrooms
- . Provision alarm system

### Additional Specifications:

- . En suite Bedrooms
- . Master Bathrooms
- . 3 Parking Spaces
- . 1 Air Condition Provision
- . Pool Optional Private
- . Heating Electric heating provision

Delivery July 2024



## Office Properties

Office Administrator

✉ info@vivorealty.com.cy

☎ (+357) 25871010

## Facilities

Aircondition, Provision

Parking, Covered

Storage

Heating, Provision

Pool, Optional

Solar photovoltaic panels, Provision

---

## Features

Thermal insulation

Easy access to highway

Pressurized water system

Bright

Alarm system, Provision

Guest WC

Quiet Area

Rental Potential

Modern design

Easy access to main roads

Garden

Internal stairs

Mountain view

Double glazing

Veranda

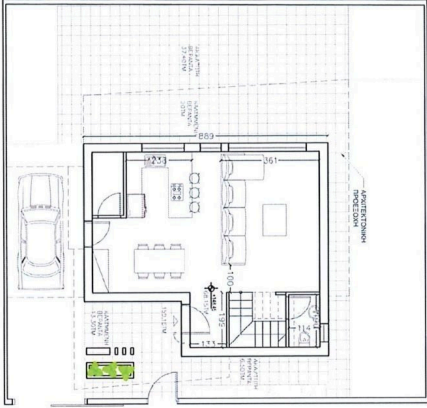
Granite countertops

En suite Bathroom

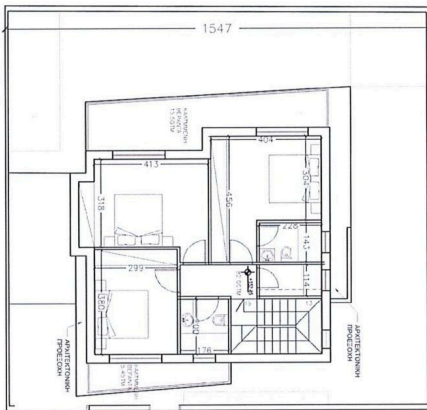
Near amenities

## Floor plans

### ΚΑΤΟΙΚΙΑ 2



ΚΑΤΩΦΗ ΙΣΟΓΕΙΟΥ



ΚΑΤΩΦΗ ΟΡΟΦΟΥ